



DESCRIPTION

The 1SS355 is available in SOD-323 Package Type

FEATURES

- Small surface mounting type.
- High Speed.($t_{rr} = 1.2\text{ns}$ Typ.)
- High reliability with high surge current handling capability.
- Available in SOD-323 Package

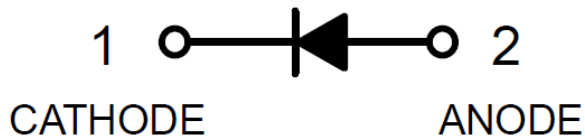
ORDERING INFORMATION

Package Type	Part Number
SOD-323	1SS355
Note	SPQ: 3,000pcs/Reel
AiT provides all RoHS Compliant Products	

APPLICATIONS

- High speed switching

PIN DESCRIPTION





ABSOLUTE MAXIMUM RATINGS

T_A=25°C

V _{RM} , Peak Reverse Voltage	90V
V _R , DC Reverse Voltage	80V
I _{FM} , Peak Forward Current	225mA
I _O , Mean Rectifying Current	100mA
I _{surge} , Surge Current (1s)	500mA
T _J , Junction Temperature	150°C
T _{STG} , Storage Temperature	-55°C~150°C

Stresses above may cause permanent damage to the device. These are stress ratings only and functional operation of the device at these or any other conditions beyond those indicated in the Electrical Characteristics are not implied. Exposure to absolute maximum rating conditions for extended periods may affect device reliability.

ELECTRICAL CHARACTERISTICS

T_A=25°C

Parameter	Symbol	Conditions	Min.	Typ.	Max.	Unit
Forward Voltage	V _F	I _F =100mA	-	-	1.2	V
Reverse Current	I _R	V _R =80V	-	-	0.1	μA
Capacitance Between Terminals	C _T	V _R =0.5V, f=1MHz	-	-	3.0	pF
Reverse Recovery Time	t _{rr}	V _R =6V, I _F =10mA, R _L =100Ω	-	-	4	ns

TYPICAL CHARACTERISTICS

$T_A=25^\circ\text{C}$

Figure 1. Forward Characteristics

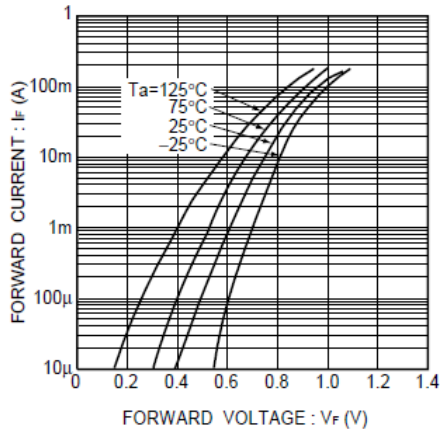


Figure 2. Reverse Characteristics

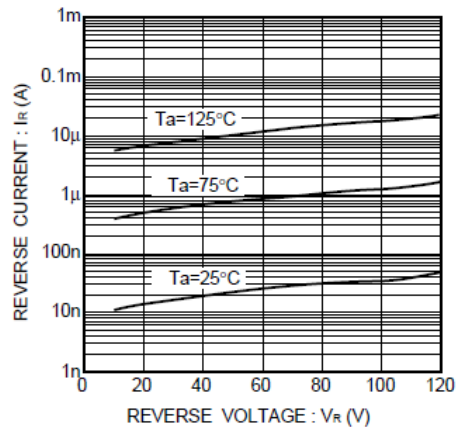


Figure 3. Capacitance Between Terminals Characteristics

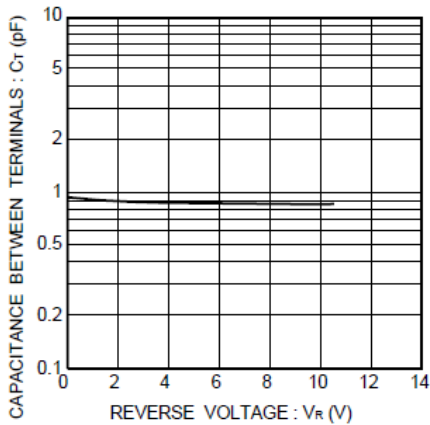


Figure 4. Reverse Recovery Time Characteristics

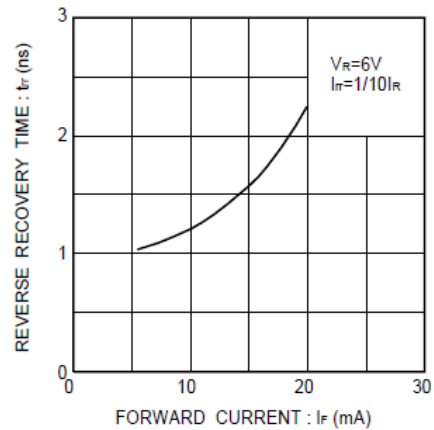


Figure 5. Surge current characteristics

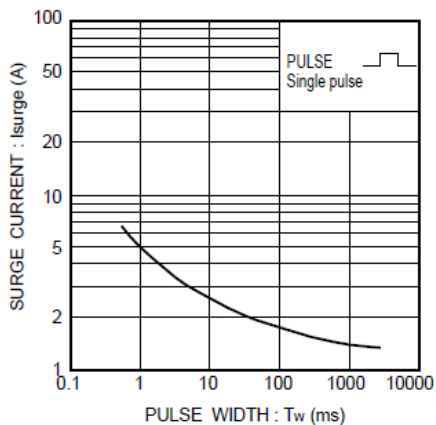
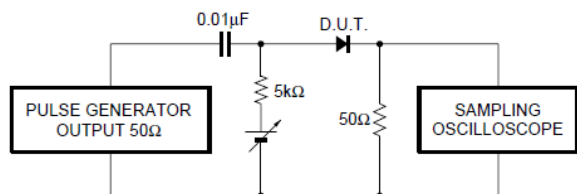


Figure 6. Reverse Recovery Time (t_{rr}) Measurement

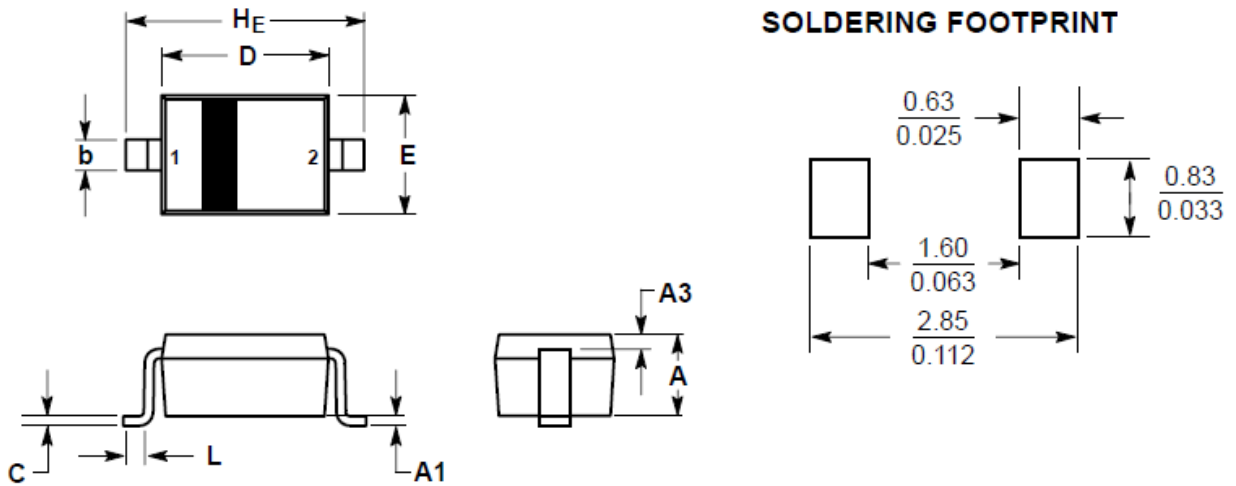
Circuit





PACKAGE INFORMATION

Dimension in SOD-323 (Unit: mm)



Symbol	Millimeters		Inches	
	Min	Max	Min	Max
A	0.80	1.00	0.031	0.040
A1	0.00	0.10	0.000	0.004
A3	0.15 REF		0.006 REF	
b	0.25	0.40	0.010	0.016
C	0.089	0.177	0.003	0.007
D	1.60	1.80	0.062	0.070
E	1.15	1.35	0.045	0.053
L	0.08	-	0.003	-
HE	2.30	2.70	0.090	0.105



IMPORTANT NOTICE

AiT Components (AiT) reserves the right to make changes to any its product, specifications, to discontinue any integrated circuit product or service without notice, and advises its customers to obtain the latest version of relevant information to verify, before placing orders, that the information being relied on is current.

AiT Components' integrated circuit products are not designed, intended, authorized, or warranted to be suitable for use in life support applications, devices or systems or other critical applications. Use of AiT products in such applications is understood to be fully at the risk of the customer. As used herein may involve potential risks of death, personal injury, or servers property, or environmental damage. In order to minimize risks associated with the customer's applications, the customer should provide adequate design and operating safeguards.

AiT Components assumes to no liability to customer product design or application support. AiT warrants the performance of its products of the specifications applicable at the time of sale.